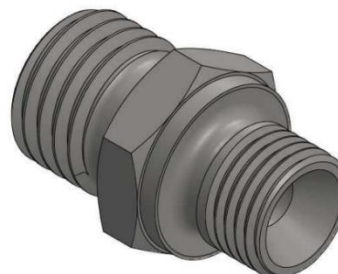
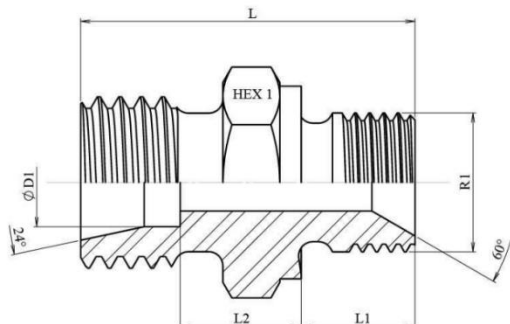








DATA SHEET - TEHNIČNI LIST



	ØD1	Series	R1	 (bar)	L	L1	L2	HEX 1	 (Kg)
89038	6	L	1/8" BSP	315	23,5	8	8,5	14	0,015
89039			1/4" BSP		28	11	10	19	0,03
			1/2" BSP		32,5	14	18,5	27	0,06
89040	8		3/8" BSP		30	12	18	22	0,041
89041			1/8" BSP		24,5	8	9,5	14	0,016
89042			1/4" BSP		29	11	11	19	0,027
89043	10		3/8" BSP		30	12	11	22	0,073
89152			1/2" BSP		32,5	14	18,5	27	0,06
89044			1/8" BSP		25,5	8	17,5	17	0,029
89045	12		1/4" BSP		30	11	12	19	0,043
89046			3/8" BSP		31	12	12	22	0,04
			1/2" BSP		33,5	14	12,5	27	0,073
89047	15		1/4" BSP		31	11	13	19	0,034
89048			3/8" BSP		32	12	13	22	0,048
89049			1/2" BSP		34,5	14	13,5	27	0,068
	18	3/4" BSP	37,5	16	21,5	32	0,1		
89050		3/8" BSP	33	12	14	22	0,073		
89051		1/2" BSP	33	12	14	27	0,073		
	22	3/4" BSP	38,5	16	22,5	32	0,106		
89052		3/8" BSP	33	12	21	22	0,066		
89153		1/2" BSP	36,5	14	15	27	0,073		
89053	22	3/4" BSP	38,5	16	15		0,107		
		1/2" BSP	38,5	14	17,5	32	0,094		
89054		3/4" BSP	40,5	16	17		0,073		
		1" BSP	44,5	19	25,5	41	0,177		

	ØD1	Series	R1	 (bar)	L	L1	L2	HEX 1	 (Kg)
89055	28	L	3/4" BSP	315	41,5	16	18	41	0,147
			1" BSP		43	19	16,5		0,17
	35		1" 1/4 BSP		46,5	20	17	46	0,217
			1" 1/2 BSP		48	22	17,5	50	0,29
	42		1" 1/2 BSP		52	19	55	0,34	

	ØD1	Series	R1	 (bar)	L	L1	L2	HEX 1	 (Kg)
89056	6	S	1/4" BSP	315	32	11	14	19	0,034
89057	8				34		16		0,04
					3/8" BSP	35	12	23	22
89058	10		1/4" BSP		34	11	16,5	19	0,043
89059			3/8" BSP		35	12	15,5	22	0,054
			1/2" BSP		39,5	14	25,5	27	0,093
89060	12		1/4" BSP		34	11	23	22	0,06
89061			3/8" BSP		37	12	17,5		0,064
			1/2" BSP		39,5	14	18	27	0,094
89062	14		3/8" BSP		39	12	19	24	0,076
89063			1/2" BSP		41,5	14	19,5	27	0,094
89064	16		3/8" BSP		39	12	18,5		0,093
89065			1/2" BSP		41,5	14	19	0,073	
89066			3/4" BSP		43,5	16	32	0,147	
89067	20		1/2" BSP		45,5	14		21	0,15
			3/4" BSP		47,5	16	34,5	0,16	
89068	25		1" BSP		50,5	19	34	41	0,24
					53,5		36,5		46
	30		1" 1/4 BSP		55,5	20	37	50	0,318
					57		42		55
	38	1" 1/2 BSP	62	22	42	55	0,42		
			64		55		0,554		

Izdelano iz Ogljikovega Jekla

Made of Carbon Steel

